

**READY TO RACE**  
»www.ktm.com

# THE DUKE-EVOLUTION



## 390 DUKE

**43.5 PS POWER**

**ABS BY BOSCH**

**ALUMINUM SWINGARM**

**ELECTRONIC FUEL INJECTION**

**UPSIDE DOWN FORK BY WP**



### 390 DUKE 200 DUKE

<b>ENGINE</b>		
<b>ENGINE TYPE</b>	373.2 CC, SINGLE CYLINDER, 4-STROKE	199.5 CC, SINGLE CYLINDER, 4 STROKE
<b>POWER</b>	43.5 Ps @ 9,000 RPM	25 PS @ 10,000 RPM
<b>TORQUE</b>	35 Nm @ 7,000 RPM	19.2 NM @ 8,000 RPM
<b>TRANSMISSION</b>	6 GEARS	6 GEARS
<b>CHASSIS</b>		
<b>FRAME</b>	STEEL TRELLIS FRAME ORANGE	STEEL TRELLIS FRAME
<b>WEIGHT</b>	154 KG (145 KG WITHOUT FUEL)	136 KG (127 KG WITHOUT FUEL)

**FURTHER INFORMATION: [WWW.KTM.COM](http://www.ktm.com)**

**KTM**  
AUTHORIZED DEALER

# KTM

© 2013, KTM-Sportmotorcycle AG

#### DISCLAIMER

Should not be emulated. The photographs are of professional motorcycle riders riding in closed racing circuits or closed roads. KTM recommends riding motorcycles only while wearing protective clothing and equipment. The accessories shown may not be a part of the standard equipment. Specifications mentioned and colors shown are subject to change without prior notice and may vary from country to country. This leaflet is for private circulation only.



[FACEBOOK.COM/INDIAKTM](https://www.facebook.com/INDIAKTM)



**KTM POWERWEAR KTM POWERPARTS KTM ORIGINAL SPARE PARTS WP**

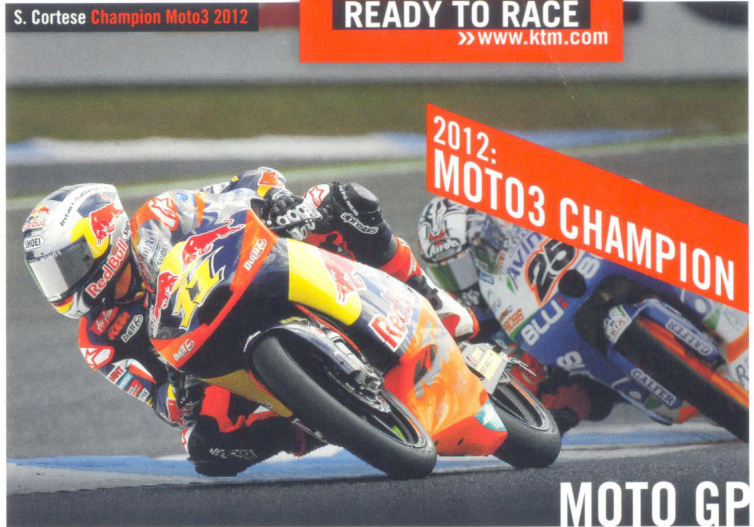
C. Depres Winner Dakar Rally 2012



12 CONSECUTIVE DAKAR WINS

RALLY

S. Cortese Champion Moto3 2012



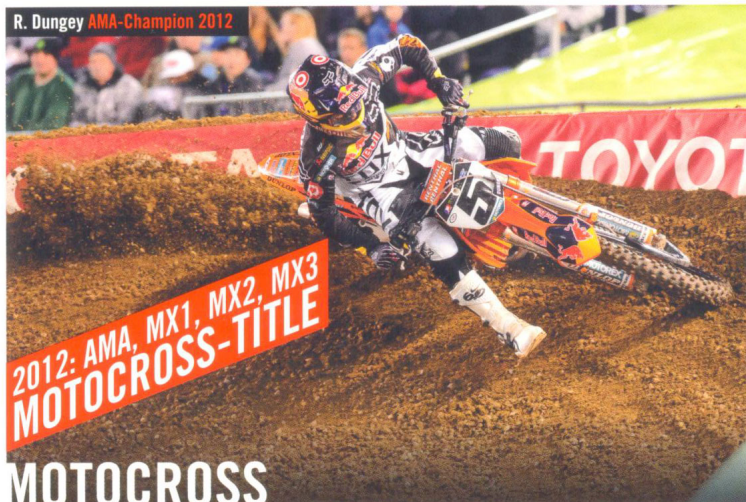
READY TO RACE

>> www.ktm.com

2012: MOTO3 CHAMPION

MOTO GP

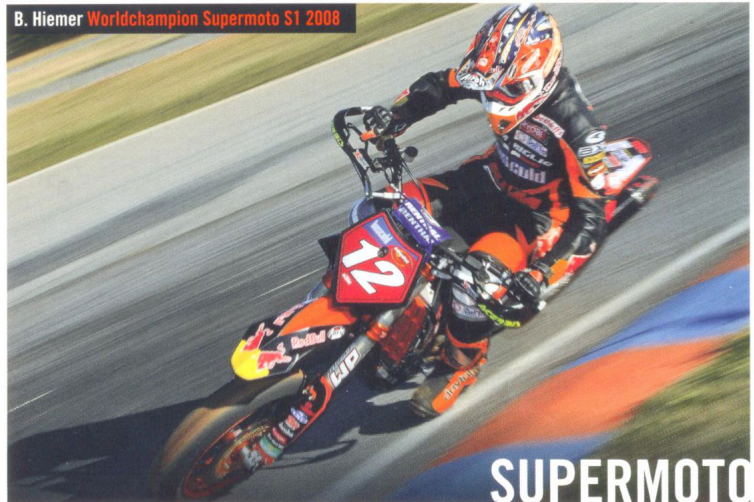
R. Dungey AMA-Champion 2012



2012: AMA, MX1, MX2, MX3 MOTOCROSS-TITLE

MOTOCROSS

B. Hiemer Worldchampion Supermoto S1 2008



SUPERMOTO

# 223 WORLD CHAMPION TITLES!

Europe's largest motorcycle manufacturer KTM comes from the world of international motorcycle racing. In addition to the toughest rally in the world, the Dakar Rally, which KTM has won twelve times in succession, KTM has also won 223 road and offroad world championships! Only KTM has succeeded in collecting as many victories and titles in such a short time. In accordance with the company's Ready to Race philosophy, insights gained in motorsport are fed seamlessly into series production. Each KTM bike therefore has a bit of world championship built in as standard.

